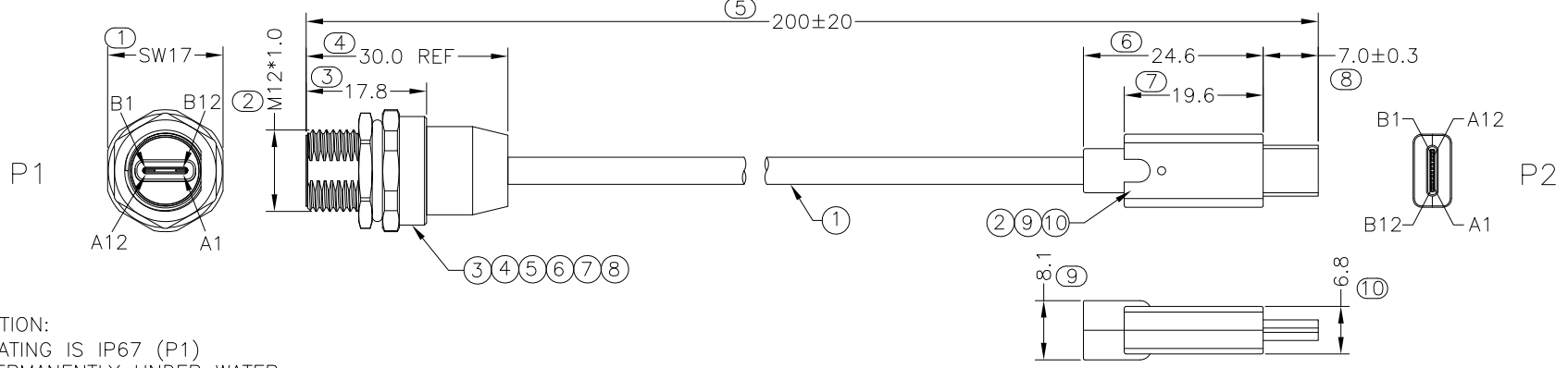
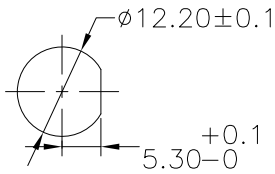


PROJECT NO:  
SGNYD2306054

REV	DESCRIPTION	DATE	APPROVED
S0	CREATED DRAWING	2023/06/13	W N



DETAILED PRODUCT DESCRIPTION:  
WATERPROOF CONNECTOR RATING IS IP67 (P1)  
THEY CAN NOT BE USED PERMANENTLY UNDER WATER  
PER ISO-20653,IEC60529

RATING VOLTAGE: 20V MAX  
RATING CURRENT: 3A MAX  
USB SUPERSPEED: USB3.1 GEN1 5Gbps  
SUPPORT FAST CHARGING

TESTING CONDITIONS:  
1. VOLTAGE:300V DC/0.1S.  
2. INSULATION RESISTANCE: 10 Mohms min.  
3. CONDUCTIVE RESISTANCE: 5 Ohms max.  
4.100% OPEN AND SHORT ELECTRICAL TEST.

\*ALL MATERIALS ARE RoHS COMPLIANT.

WIRE LIST

P1	PAIR	COLOR	P2
(A4+B4+A9+B9)VCC	---	(VBUS) RED	VCC(A4+B4+A9+B9)
(A1+B1+A12+B12)GND	---	(GND) BLACK + Braid	GND(A1+B1+A12+B12)
SHELL	---		SHELL
A7+B7	XX	(Dn1) WHITE	A7
A6+B6	XX	(Dp1) GREEN	A6
A2 (SSTXp1)	XX	BROWN	(SSRXp1) A2
A3 (SSTXn1)	XX	ORANGE	(SSRXn1) A3
B11 (SSRXp1)	XX	GREEN	(SSTXp1) B11
B10 (SSRXn1)	XX	YELLOW	(SSTXn1) B10
B2 (SSTXp2)	XX	BLUE	(SSRXp2) B2
B3 (SSTXn2)	XX	BLACK	(SSRXn2) B3
A11 (SSRXp2)	XX	RED	(SSTXp2) A11
A10 (SSRXn2)	XX	WHITE	(SSTXn2) A10
A5	---	(CC) PURPLE	A5
B5	---	(VCONN) RED	B5
A8	---	(SBU1) ORANGE	A8
B8	---	(SBU2) YELLOE	B8

ITEM	PART NO.	SPECIFICATION	Q'TY	UNIT
⑩	N/A	BLACK PVC	6	g
⑨	PL00012	LD-PE	1.5	g
⑧	GL00002	BLACK A/B GLUE (EPOXY RESIN)	2	g
⑦	YDTK0119	M12*1.0 BRASS NICKEL PLATED NUT L*W=2.0*15MM	1	PCS
⑥	OR00048	O-RING GREEN FKM $\phi 10.0 \times \phi 1.5 \text{MM}$	1	PCS
⑤	NU00048	M12*1.0 BRASS NICKEL PLATED NUT L*W=2.0*15MM	1	PCS
④	WK00662	M12 TYPE C PANEL SHELL NICKEL PLATED BRASS M12*1.0	1	PCS
③	N/A	USB TYPE C F.BLACK INSED ULATOR SHELL NICKEL PLATED GOLD 1U" WITH PCBA C=10nF	1	SET
②	N/A	USB TYPE C M.BLACK INSULATOR SHELL NICKEL PLATED GOLD 1U" WITH PCBA C=10nF	1	SET
①	N/A	USB3.1 UL20276[32#*1P(7/0.08TC)+AL+H-Mylar]*4C+32#*1P+32#*4C+24#*2C+AL+D+B OD4.5 Black	1	PCS

**SIGNAL**<sup>®</sup>  
Shenzhen Signal Electronics co.,Ltd

TITLE  
USB 3.1 TYPE-C F PANEL  
M12\*1.0 TO TYPE-C M CABLE

DRAWN BY	DATE	SGN NO	940000-56-014	REV.
CHECKED BY	DATE	DWG NO	SGNYD2306054-1864	
CHECKED BY	DATE	CUSTOMER		SO
APPROVED BY	DATE	TOLERANCES ARE:	THIRD ANGLE PROJECTION	
		DECIMALES .x ±0.5 .xx ±0.20	ANGLES x.' ±2.0' .x' ±1.0'	SIZE: A4 UNITS: mm
		PERMISSION OF SIGNAL COMPANY IS PROHIBITED.		SCALE: 1:1 SHEET: 1 OF 1