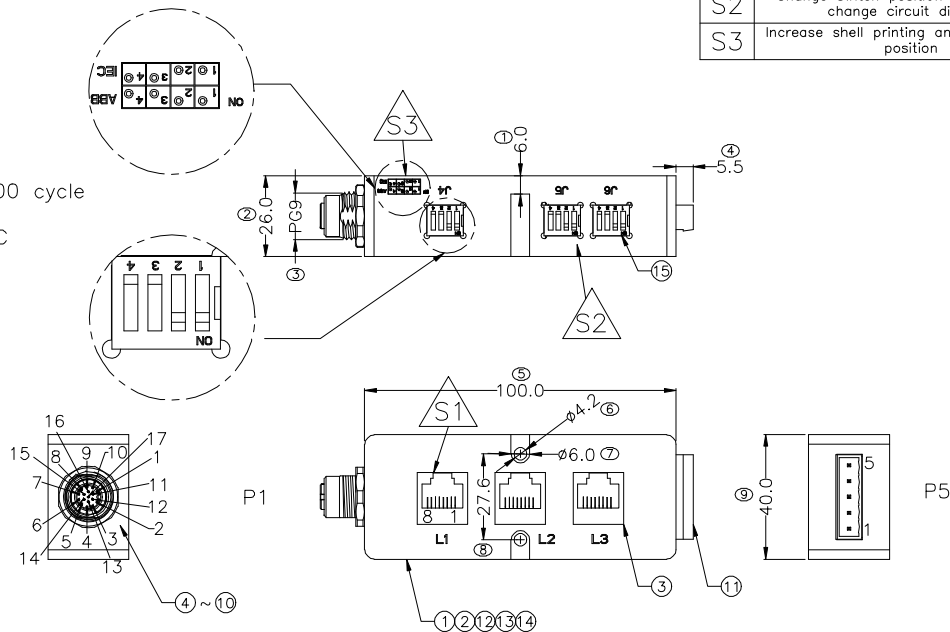


- Description:
- Electrical characteristics
 Rated voltage: 30V
 Insulation resistance: $\geq 100M\Omega$
 Rated current: 0.5A
 Contact resistance of the connector $\leq 10m\Omega$
 - Mechanical characteristics: plugging / cycle >100 cycle
 - Environmental characteristics
 Operating temperature: $-25^{\circ}C \sim +85^{\circ}C$
 - All materials are RoHS compliant.

See page 2 for circuit diagram
 Switch status: ABB mode



REV	DESCRIPTION	DATE	APPROVED
S2	Change switch position and quantity, change circuit diagram	2021/04/22	ZZJ
S3	Increase shell printing and change font position	2021/10/28	ZZJ

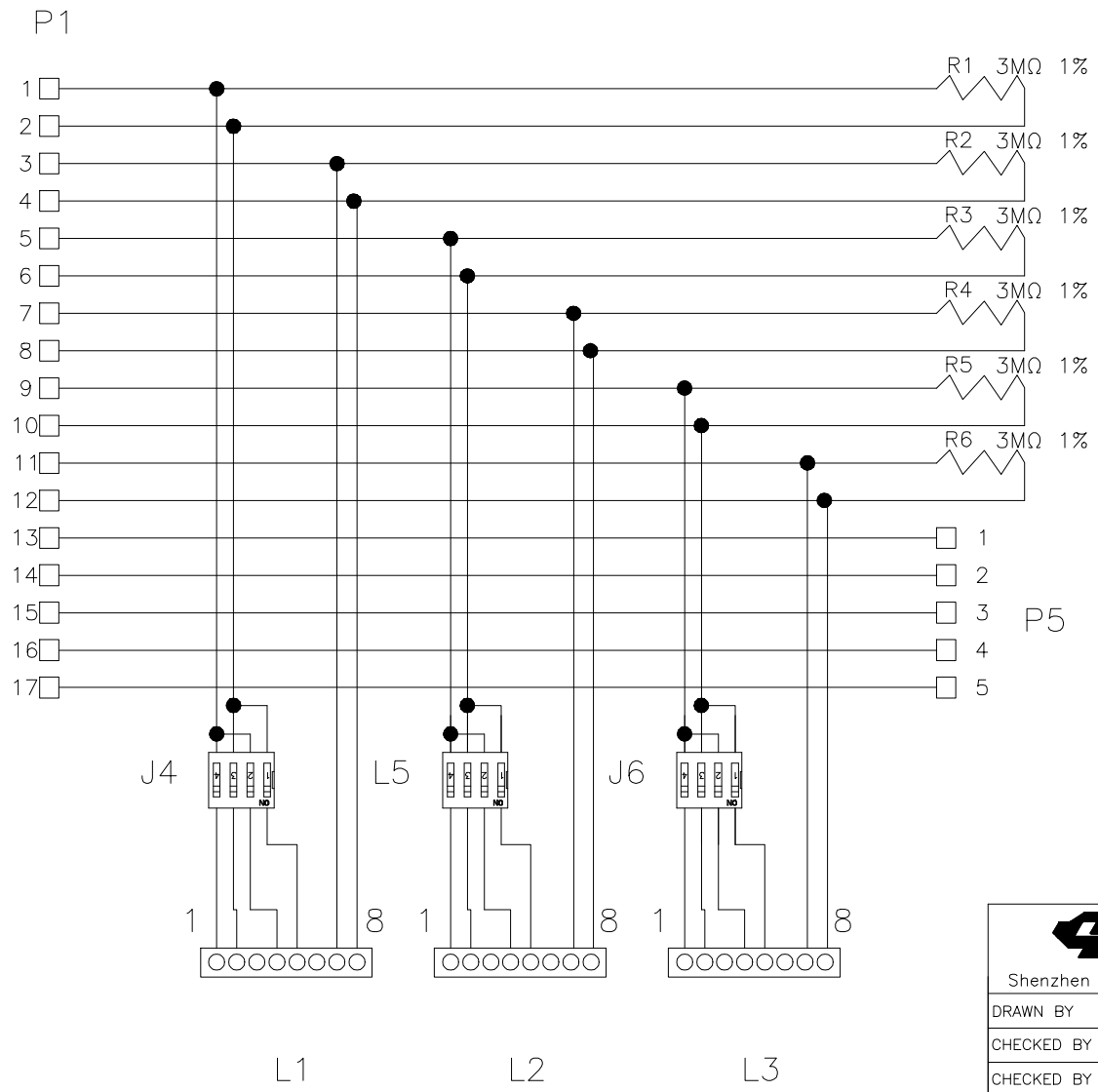
16	N/A	28AWG wire L=50mm	1	PCS
15	N/A	Toggle switch Brand CUI DS03-254-04BE	3	PCS
14	N/A	FPC soft board	1	PCS
13	SW00038	Phillips head screw M3*0.5 white L=6.5mm	6	PCS
12	N/A	PCBA L90*W30*T1.6mm double panel With Switch	1	PCS
11	N/A	WAFER pitch 5.08 5P 90 degree curved needle plug male pin holder	1	PCS
10	NU00006	PG9 brass nickel plated nut L*W=2.8*18mm	1	PCS
9	OR00012	M12 female green fluoro rubber waterproof apron $\phi 7.00*1.5mm$	1	PCS
8	OR00008	Green fluoro rubber waterproof apron, $\phi 13.0*\phi 2.0mm$	1	PCS
7	WK00120-2	M12 shockproof brass nickel plated female front lock housing, PG9	1	PCS
6	TE00208	M12 17P F A TYPE female terminal gold-plated 1u" wire 23.75mm	7	PCS
5	TE00207	M12 17P F A TYPE female terminal gold-plated 1u"	10	PCS
4	CN00203	M12 A TYPE 17PIN shockproof black nylon female core	1	PCS
3	CN00222	RJ45 crystal head 8P8C 180 degrees (female) with metal shell	3	PCS
2	N/A	Junction box back cover aluminum black L94*34*3mm	1	PCS
1	N/A	Junction box front box aluminum black L100*40*26mm	1	PCS


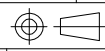
ITEM	PART NO.	SPECIFICATION	Q'TY	UNIT
------	----------	---------------	------	------

SIGNAL [®] Shenzhen Signal Electronics co.,Ltd		TITLE M12 A-17P/F+3*RJ45+WAFER PH5.08 5M ADAPTER JUNCTION BOX	
		SGN NO 920117-01-003	REV.
DRAWN BY	DATE	DWG NO SGNYD20080221	S3
CHECKED BY	DATE	CUSTOMER	
CHECKED BY	DATE		
APPROVED BY	DATE		
THE INFORMATION CONTAINED IN THIS DRAWING IS THE SOLE PROPERTY OF SIGNAL COMPANY. ANY REPRODUCTION IN PART OR WHOLE WITHOUT THE WRITTEN PERMISSION OF SIGNAL COMPANY IS PROHIBITED.		TOLERANCES ARE: DECIMALES .x ± 0.5 ANGLES .x' $\pm 2.0'$.xx ± 0.20 .x' $\pm 1.0'$	THIRD ANGLE PROJECTION
		SIZE: A4	UNITS: mm
		SCALE: 1:1	SHEET: 1 OF 2

REV	DESCRIPTION	DATE	APPROVED
S3	Increase shell printing and change font position	2021/04/28	ZZJ

Circuit diagram



 SIGNAL [®] Shenzhen Signal Electronics co.,Ltd		TITLE M12 A-17P/F+3*RJ45+WAFER PH5.08 5M ADAPTER JUNCTION BOX	
		SGN NO 920117-01-003	REV.
DRAWN BY	DATE	DWG NO SGNYD20080221	S3
CHECKED BY	DATE	CUSTOMER	
CHECKED BY	DATE		
APPROVED BY	DATE	TOLERANCES ARE:	
THE INFORMATION CONTAINED IN THIS DRAWING IS THE SOLE PROPERTY OF SIGNAL COMPANY. ANY REPRODUCTION IN PART OR WHOLE WITHOUT THE WRITTEN PERMISSION OF SIGNAL COMPANY IS PROHIBITED.		DECIMALES .x ±0.5	ANGLES x' ±2.0'
		.xx ±0.20	.x' ±1.0'
		THIRD ANGLE PROJECTION 	SIZE: A4
		SCALE: 1:1	SHEET: 2 OF 2