

REV	DESCRIPTION	DATE	APPROVED
S0	CREATED DRAWING	2021/08/13	ZCH

#### Detailed product description:

##### Connector electrical character

Rating voltage: 100V AC, 140V DC,

Rating current : 2A

Insulation resistance: >1000M ohms

Contact resistance of connector  $\leq 10\text{m ohms}$

Dielectric withstanding voltage: 300V AC R.M.S.Max.

##### Mechanical characteristics:

Mating cycles >500 cycles

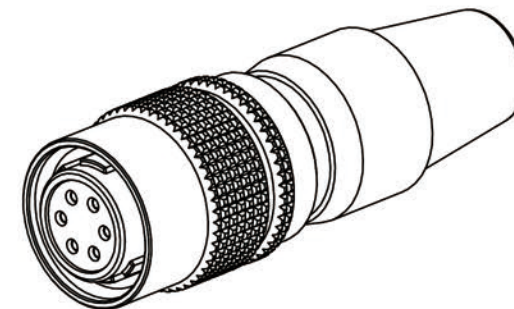
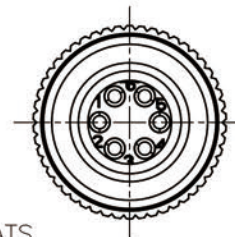
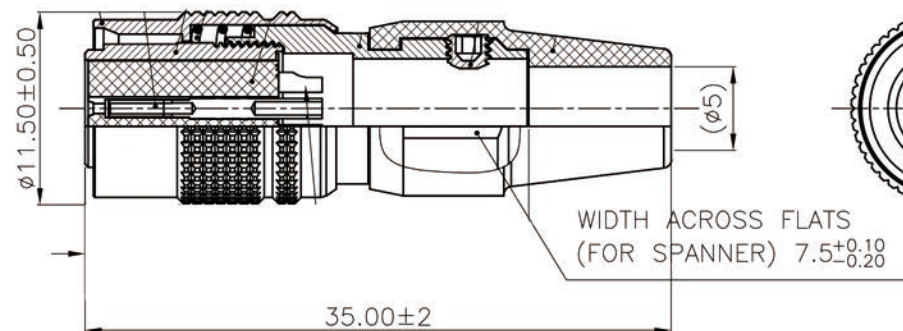
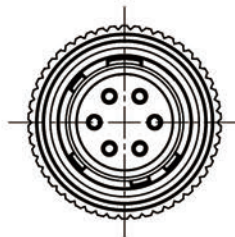
Operating temperature:  $-25^{\circ}\text{C} \sim +85^{\circ}\text{C}$


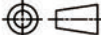
Storage temperature:  $-10^{\circ}\text{C} \sim +60^{\circ}\text{C}$

Cable OD:  $\phi 5.0\text{mm}$

Applicable Wire:  $0.15\text{mm}^2(26\text{AWG})$ ,

\*All materials are RoHS compliant.



 <b>SIGNAL®</b> Shenzhen Signal Electronics co.,Ltd		TITLE PUSH PULL 6PIN PLUG (SOLDER TYPE)			
DRAWN BY	DATE	SGN NO 950106-21-001	REV.		
CHECKED BY	DATE	DWG NO			
CHECKED BY	DATE	CUSTOMER	S0		
APPROVED BY	DATE	TOLERANCES ARE: DECIMALES      ANGLES			
THE INFORMATION CONTAINED IN THIS DRAWING IS THE SOLE PROPERTY OF SIGNAL COMPANY. ANY REPRODUCTION IN PART OR WHOLE WITHOUT THE WRITTEN PERMISSION OF SIGNAL COMPANY IS PROHIBITED.		.x ±0.5	x.* ±2.0°	THIRD ANGLE PROJECTION	
		.xx ±0.20	.x* ±1.0°	SIZE: A4	