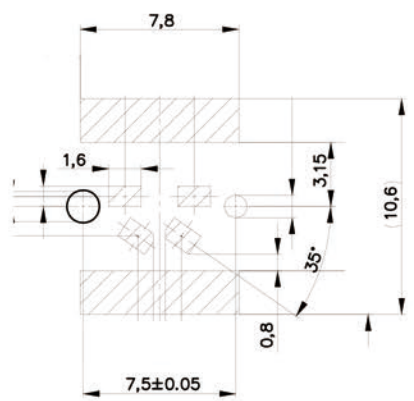
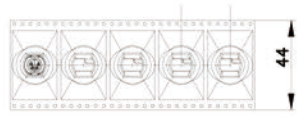


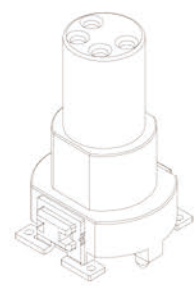
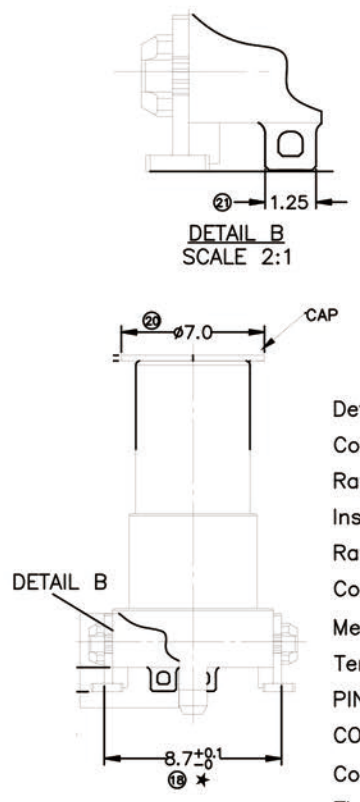
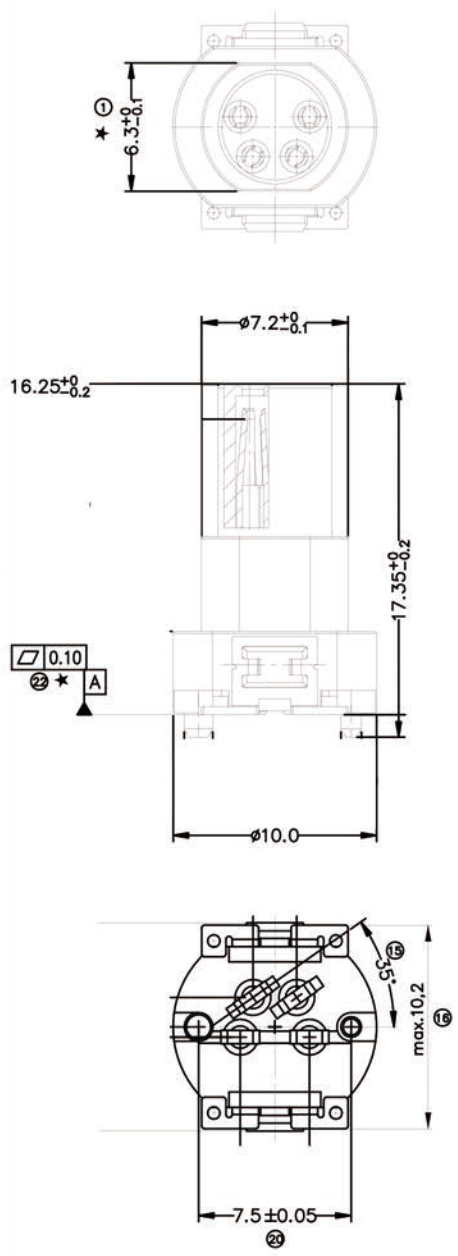
REV	DESCRIPTION	DATE	APPROVED
S0	UPDATE DRAWING	2024/8/28	ZCH



RECOMMENDED PCB LAYOUT



TAPE AND REEL WITH PAD/100 PCS



Detailed Product Description

Connector electrical characteristics:

Rating voltage: 30V

Insulation resistance: >100MΩ

Rating current: 3A

Contact resistance of connector ≤5mΩ

Mechanical characteristics: mating / cycle >100 cycle

Termination: SMT

PINS: 4

CODING: A


Configuration: M8, female / stamped contacts

The highest temperature: 265°C

According to IEC 61076-2-104

Marked "★" for key inspection dimensions

*ALL MATERIALS ARE RoHS COMPLIANT.

 Shen Zhen Signal Electronics co.,Ltd		TITLE M8 A/F 4PIN SMT	
		SGN NO 080104-04-029	REV. S0
DRAWN BY	DATE	DWG NO	CUSTOMER
CHECKED BY	DATE		
APPROVED BY	DATE		
THE INFORMATION CONTAINED IN THIS DRAWING IS THE SOLE PROPERTY OF SIGNAL COMPANY. ANY REPRODUCTION IN PART OR WHOLE WITHOUT THE WRITTEN PERMISSION OF SIGNAL COMPANY IS PROHIBITED.		TOLERANCES ARE:	
		DECIMALES	ANGLES
		.x ±0.15 .xx ±0.10	x.* ±2.0° .x.* ±1.0°
		THIRD ANGLE PROJECTION	SCALE: 1:1
		SIZE: A4	UNITS: mm
		SHEET: 1 OF 1	

ITEM	PART NO.	SPECIFICATION	Q'TY	UNIT
------	----------	---------------	------	------