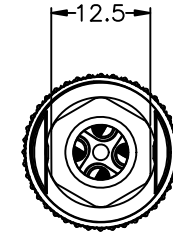
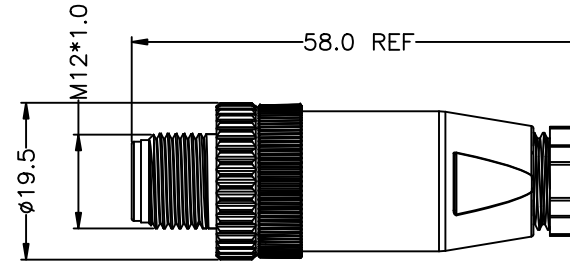
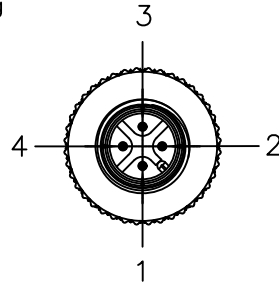


REV	DESCRIPTION	DATE	APPROVED
S0	CREATED DRAWING	2021/10/14	ZK

Detailed Product Description:
Waterproof connector rating is IP67/IP68
They can not be used permanently under water
Per ISO-20653,IEC60529

Other Specification
Contact PIN: Brass with Gold plating.
Coupling nut/screw: Brass with nickel plating
Insulation plastic: PA66+GF
Operating temperature: -25°C ~ +85°C

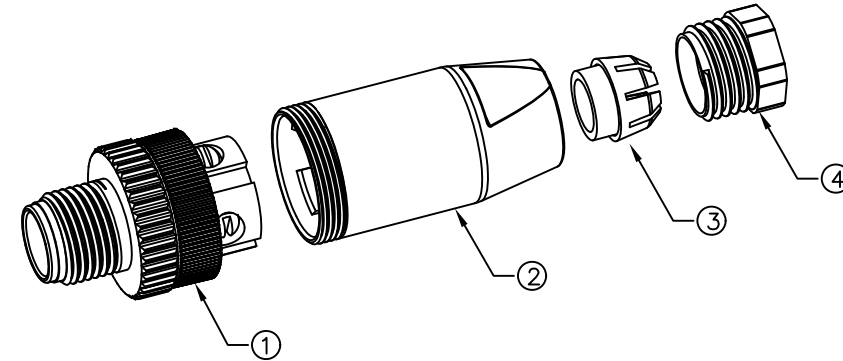
*ALL MATERIALS ARE RoHS COMPLIANT.



PLASTIC

Electrical character

Part Number	Contacts	Rated voltage		Rated current	Contact Resistance	Cable OD (mm)
		A/C	D/C			
120103-01-001		250V	250V	4A	10mΩ	4~6
120104-01-001		250V	250V	4A	10mΩ	4~6
120404-01-001		250V	250V	4A	10mΩ	4~6
120205-01-005		60V	60V	4A	10mΩ	4~6
120105-01-001		60V	60V	4A	10mΩ	4~6
120108-01-001		30V	30V	2A	10mΩ	4~6



④	YDNU0082	TAIL PLASTIC NUT	1	PCS
③	N/A	PG7 WATERPROOF HOSE	1	SET
②	CN01070	M12 PALSTIC ASSEMBLY SHELL	1	PCS
①	N/A	M12 A CODING MALE CONNECTOR	1	SET
ITEM	PART NO.	SPECIFICATION	Q'TY	UNIT

SIGNAL® ShenZhen Signal Electronics co.,Ltd		TITLE M12 A/M PLASTIC ASSEMBLY CONNECTOR(PG7)	
		SGN NO N/A	REV. S0
DRAWN BY	DATE	DWG NO	CUSTOMER
CHECKED BY	DATE		
CHECKED BY	DATE		
APPROVED BY	DATE		
THE INFORMATION CONTAINED IN THIS DRAWING IS THE SOLE PROPERTY OF SIGNAL COMPANY. ANY REPRODUCTION IN PART OR WHOLE WITHOUT THE WRITTEN PERMISSION OF SIGNAL COMPANY IS PROHIBITED.		TOLERANCES ARE:	THIRD ANGLE PROJECTION
DECIMALES	ANGLES	SIZE: A4	UNITS: mm
.x ±0.5	x.° ±2.0°	SCALE:	SHEET: 1 OF 1
.xx ±0.20	.x.° ±1.0°		