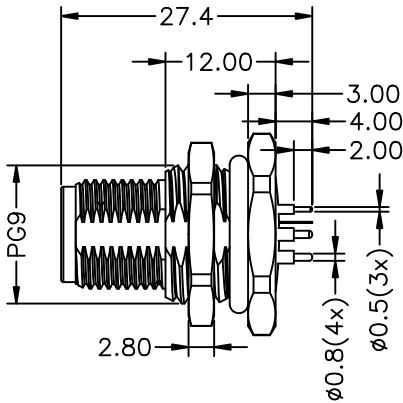
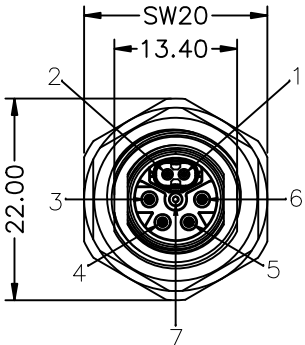
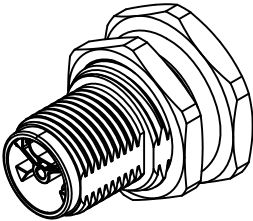
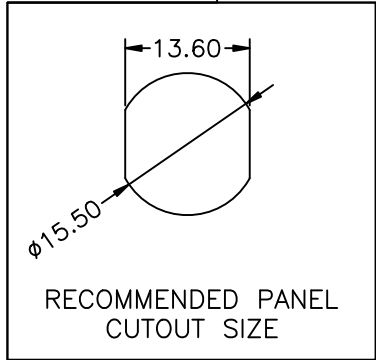
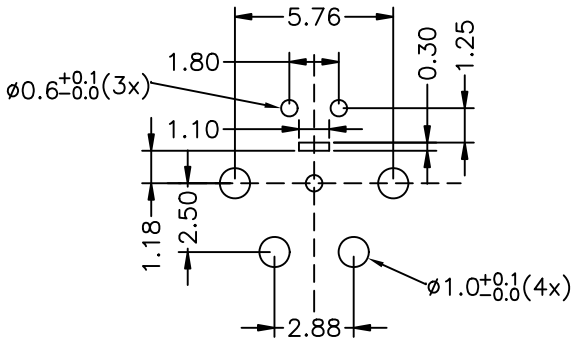


REV	DESCRIPTION	DATE	APPROVED
S0	CREATED DRAWING	2024/11/30	ZHY



Electrical character

Rated voltage	50V/AC,63V/DC	
Rated current	2A	8A
Mechanical characteristics (mating cycle)	>100	
Degree of protection (ISO-20653,IEC60529)	IP67	
Operating temperature (depending on cable quality)	-25°C ~ +80°C	
Destructive withstand force between connector and overmold exceeds	**kgf	
Tightening torque (range)	0.4~1.8Nm	
Pollution degree	3	
ALL MATERIALS ARE RoHS COMPLIANT		



RECOMMENDED PCB
OPENING SIZE

④	GL00002	BLACK EPOXY RESIN -50°C~+130°C	2	g
③	NU00006-2	PG9 BRASS NICKEL-PLATED NUTS L*W=2.8*18mm	1	PCS
②	N/A	M12-SPE BRASS FRONT LOCK PANEL MALE HOUSING PG9	1	PCS
①	N/A	SPE-I M12 CODING 7PIN MALE CONNECTOR	1	SET
ITEM	PART NO.	SPECIFICATION	Q'TY	UNIT



Shenzhen Signal Electronics co.,Ltd

DRAWN BY	DATE
CHECKED BY	DATE
CHECKED BY	DATE
APPROVED BY	DATE

THE INFORMATION CONTAINED IN THIS DRAWING IS THE SOLE PROPERTY OF SIGNAL COMPANY.
ANY REPRODUCTION IN PART OR WHOLE WITHOUT THE WRITTEN PERMISSION OF SIGNAL COMPANY IS PROHIBITED.

TITLE
SPE-I M12 HYBRID 7PIN FRONT
LOCKING PANEL MALE CONNECTOR

SGN NO	121507-03-001	REV.
DWG NO		
CUSTOMER		S0

TOLERANCES ARE:	ANGLES	THIRD ANGLE PROJECTION
.x ±0.50	x.* ±2.0°	SIZE: A4
.xx ±0.20	.x.* ±1.0°	UNITS: mm
		SCALE: 1:1
		SHEET: 1 OF 1