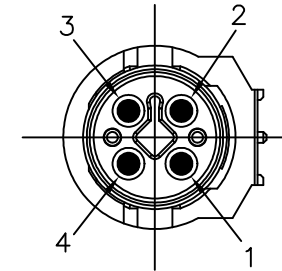
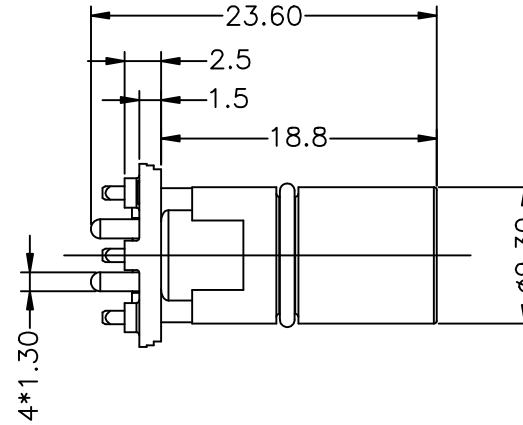
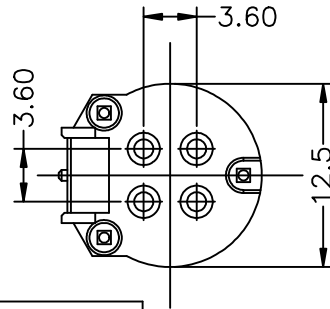


REV	DESCRIPTION	DATE	APPROVED
S0	CREATED DRAWING	2023/06/17	ZK

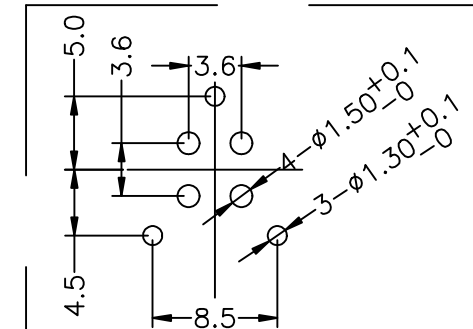
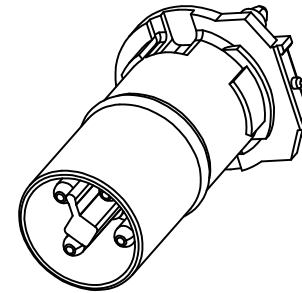


Placement direction



Electrical character

Rated voltage	63V AC/DC
Rated current	12A
Mechanical characteristics (mating cycle)	>100
Degree of protection (ISO-20653, IEC60529)	IP67
Operating temperature (depending on cable quality)	-25C ~ +85°C
Destructive withstand force between connector and overmold exceeds	**kgf
Tightening torque (range)	0.4~1.8Nm
Pollution degree	3
ALL MATERIALS ARE RoHS COMPLIANT	



推荐开孔

⑧	ZX00035	Carton 34.5*22.5*33cm(Material: K=K)	1/1040	PCS
⑦	BA00015	55*75.5cm waterproof bag (into carton)(thickness 0.03mm on one side)	1/1040	PCS
⑥	ZX00149	M12L Panel Panel (THR) blister box chassis	1/80	PCS
⑤	ZX00148	M12L Panel (THR) blister box top cover	1/80	PCS
④	OR00047	O-RING GREEN FKM Ø7.5*1.0mm	1	PCS
③	TE00240-2		1	PCS
②	TE00239-2	M12 T-plate end brass plated 3u" male needle Ø1.5*21.7mm	3	PCS
①	CN00263-2	M12 T 4P male Black plastic core (Material: LCP)	1	PCS
ITEM	PART NO.	SPECIFICATION	Q'TY	UNIT



Shenzhen Signal Electronics Co., LTD

DRAWN BY	DATE
CHECKED BY	DATE
CHECKED BY	DATE
APPROVED BY	DATE

THE INFORMATION CONTAINED IN THIS DRAWING IS THE SOLE PROPERTY OF SIGNAL COMPANY. ANY REPRODUCTION IN PART OR WHOLE WITHOUT THE WRITTEN PERMISSION OF SIGNAL COMPANY IS PROHIBITED.

TITLE M12 T CODING 4P MALE PANEL CONNECTOR (THR)

SGN NO	120604-03-002	REV.
DWG NO		
CUSTOMER		S0

TOLERANCES ARE:	THIRD ANGLE PROJECTION	
DECIMALES	ANGLES	
.x ±0.5	x.* ±2.0°	SIZE: A4 UNITS: mm
.xx ±0.20	.x.* ±1.0°	SCALE: SHEET: 1 OF 1