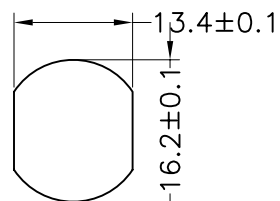


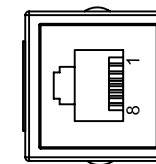
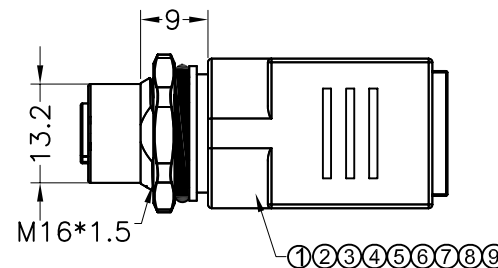
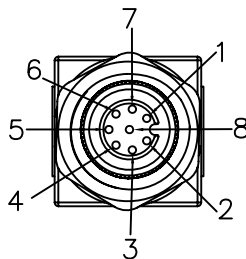
PROJECT NO:

XXXXXX

REV	DESCRIPTION	DATE	APPROVED
S0	CREATED DRAWING	2019/07/15	YMX

Recommended
Panel Cut-Off

P1

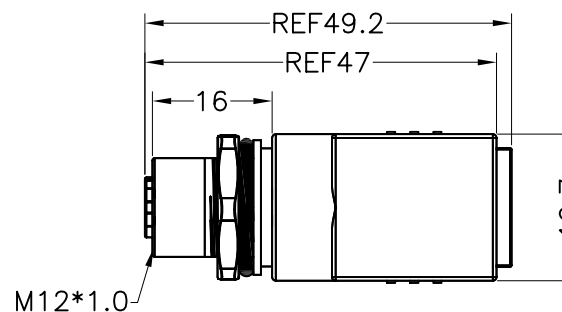


P2

TESTING CONDITIONS:

1. VOLTAGE:300V DC/0.1S.
2. INSULATION RESISTANCE: 10 Mohms min.
3. CONDUCTIVE RESISTANCE: 5 Ohms max.
- 4.100% OPEN AND SHORT ELECTRICAL TEST.

*ALL MATERIALS ARE RoHS COMPLIANT.



WIRE LIST

P1	COLOR	P1
1	WHITE	1
2	BROWN	2
3	GREEN	3
4	YELLOW	4
5	GRAY	5
6	PINK	6
7	BLUE	7
8	RED	8
SHELL	BLACK	SHELL

ITEM	PART NO.	SPECIFICATION	Q'TY	UNIT
⑨	OR00012	O-Ring GREEN FKM $\phi 7.0 * \phi 1.5 \text{mm}$	1	PCS
⑧	PL00007	HD PE	3	g
⑦	PL00008	BLACK PVC 30P	10	g
⑥	OR00008	O-Ring GREEN FKM $\phi 13.0 * \phi 2.0 \text{mm}$	1	PCS
⑤	NU00008	M16 Brass plated ni NUT L*W=2.8*19mm	1	PCS
④	WK00194	M12 F Brass plated ni front mount M16*1.5 L=21mm	1	PCS
③	N/A	M12 A Coding 8pin female connector	1	SET
②	CN00222	RJ45 8P8C STRAIGHT ANGLE WITH SHEILD	1	PCS
①	N/A	UL1061 24AWG HOOK UP WIRE	1	PCS



SIGNAL®

ShenZhen Signal Electronics co.,Ltd

DRAWN BY

DATE

CHECKED BY

DATE

APPROVED BY

DATE

THE INFORMATION CONTAINED IN THIS DRAWING IS THE SOLE
PROPERTY OF SIGNAL COMPANY.
ANY REPRODUCTION IN PART OR WHOLE WITHOUT THE WRITTEN
PERMISSION OF SIGNAL COMPANY IS PROHIBITED.

TITLE M12 A CODING 8P/F
TO RJ45/F ADAPTER

SGN NO 120108-10-004

REV.

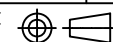
DWG NO SPM12SA08004

CUSTOMER

S0

TOLERANCES ARE:

DECIMALES ANGLES

.x ± 0.50 x.' $\pm 2'$.xx ± 0.20 .x' $\pm 1'$ THIRD ANGLE
PROJECTION

SIZE: A4 UNITS: mm

SCALE: SHEET: 1 OF 1